

MITTELSTAEDT FAMILY PHOTOS



1956 - (l-r) Fern Mittelstaedt (Erich's wife), Olga Hunt (daughter of Hugo & Meta), Aunt Meta (Hugos wife), Aunt Marie (Otto's wife).



1957- CHRISTMAS WEEK

(l-r) Clara Mittelstaedt, Clara Geske, Dad Erich Mittelstaedt,
Franklin Geske, and Walter Mittelstaedt.

MITTELSTAEDT FAMILY PHOTOS



FIRST MITTELSTAEDT REUNION - JULY 3, 1960

(l-r) Back row: Marie (Otto) Mittelstaedt, Louise (Mittelstaedt) Schulze, Clara (Mittelstaedt) Geske, Ernest Heckman, Lillie Grothe, Martin Heckman.
Kneeling: Erich, Helmuth, Martin and Arnold Mittelstaedt.



1941 - ERICH MITTLESTAEDT FAMILY

(l-r) Back: Pearl, Ralph, Zelda. Front: Lois, Richard, Shirley.
(Trees behind children were the marking for the 2nd Dugout).

MITTELSTAEDT FAMILY PHOTOS

- 1947 -

(l-r) Back: Lois and Zelda.
Middle row: Shirley, Richard,
and Robert. In front: Roy.
(with 1939 Chevrolet)



Tech Sgt. Lawrence Mittelstaedt (in uniform) holding Shirley.
Back row: Pearl and Velda (holding Roy). Middle row: Ralph and Loyd.
Front row: Lois, Richard, Darrell Grothe. In very front: Robert.



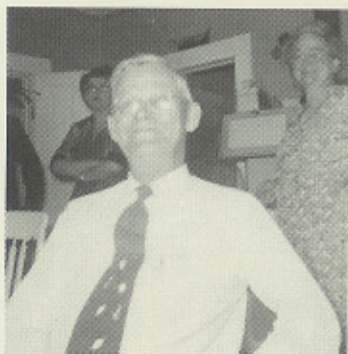
1952 - Shirley &
Richard Mittelstaedt
with 4-H calves.

MITTELSTAEDT FAMILY PHOTOS



Pearl
Mittelstaedt
in 1949.
Note the
wood picket
fence.

Pearl
and Zelda
Mittelstaedt
in 1951.
Note the
wire fence.



Hugo Mittelstaedt



Rueben (Hugo's son) and
Vernetta Mittelstaedt.

DISTRICT 6 SOUTH

This was the country school that all the Mittelstaedt's children and the children from the neighborhood attended. The school was 2½ miles from the farm. Sometimes dad (Erich) would take us to the school with the car, which at that time was a Model A Ford or the 1939 Chevrolet sedan.

One time going to school, the Model A Ford caught fire. I could see the flames from inside the car and I told Dad that the car was on fire. Dad just stopped the car and took some dirt and threw it on the flames. The flames went out and dad started it up again and took us to school. Most of the time, we had to walk home from school, then we had the chores to do when we got home.

These were some of the games that the children of District 6 South played. (This was (BT) before Television). They were "Clap-in, Clap-Out", "Button Button, who has the Button", "Spin the Bottle", "Drop the Hanky". These games were played inside during stormy weather.

Then the games that were played outside were, "Pump-Pump, Pull-Away", "Tag", "Andy Eye Over", "Fox and Goose", "Softball", "Tug of War", "Drown the Gopher", and "Hop Scotch". When there was snow, we went sleigh riding. John Froehlich would take up the barb wire so we could sleigh ride down the hill. As you can see from the photo, we had a real good hill to go down when we were riding the sleigh.



SCHOOL DISTRICT 6 - 1950

(l-r) Back row: Richard Mittelstaedt, teacher Miss Franzien, LaVonn Spreeman. Middle row: Sharon Retzlaff, Robert Seegebarth, Robert Mittelstaedt, JoAnn Seegebarth. Front row: Shirley Mittelstaedt, JoAnn Raasch, Ronald Wagner, Wilmer Spreeman, Mary Wagner, Gerald Timperley, Roy Mittelstaedt.

(this was the group that was snowed in during the blizzard in 1950)

THE BLIZZARD OF 1948-1949 & 1950

by Richard E. Mittelstaedt

The cold season got off to a mild start in 1948. Mid-November was looking like shirt-sleeve weather until the 18th of November, which was my mother's birthday. A blizzard surprised the southwest Nebraska town of McCook, then it cut a diagonal path across the state to the northeast.

For November, it was a vicious storm that gathered force as it traveled. Albion got 20 inches of snow on the heels of powerful winds. Hartington was buried under two feet of snow, as well as Pierce and Hadar, which had four feet of snow on the level ground.

The highways and rural roads were drifted over. Everyone in Pierce County said that my dad, Erich Mittelstaedt, knew that we were in for a real bad storm as this was the only year that dad had rented a house in Pierce for us. On the streets of Pierce, the snow was at least four feet deep.

You can see by the pictures that the snow was deep. The bulldozers had a lot of snow to move. You can see by the car that the snowbanks were real deep.

After a return to mild weather, two more snowstorms hit in December, one just before Christmas and another soon after. They covered the same area with two more feet of snow.

All of these storms were just a prelude to the monster blizzard that pounded the northern half of the state for up to three days right after the new year in 1949.

For weeks after the blizzard, much of northern Nebraska was still cut off from the rest of the state. Snowplows made slow progress along roads, as they were hard-packed with 30 foot snowdrifts.



Snowdrifts made a tunnel into the garage.