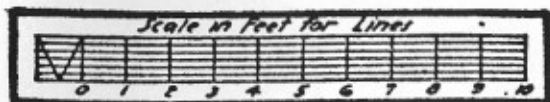
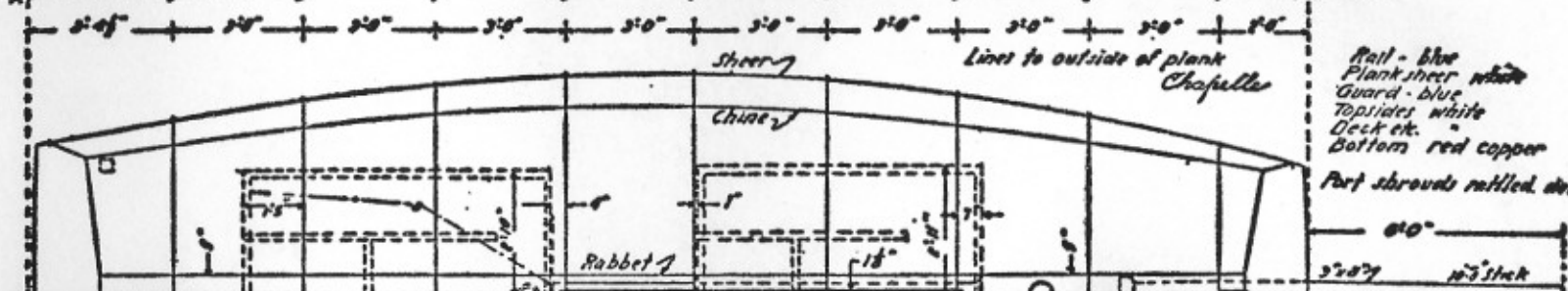
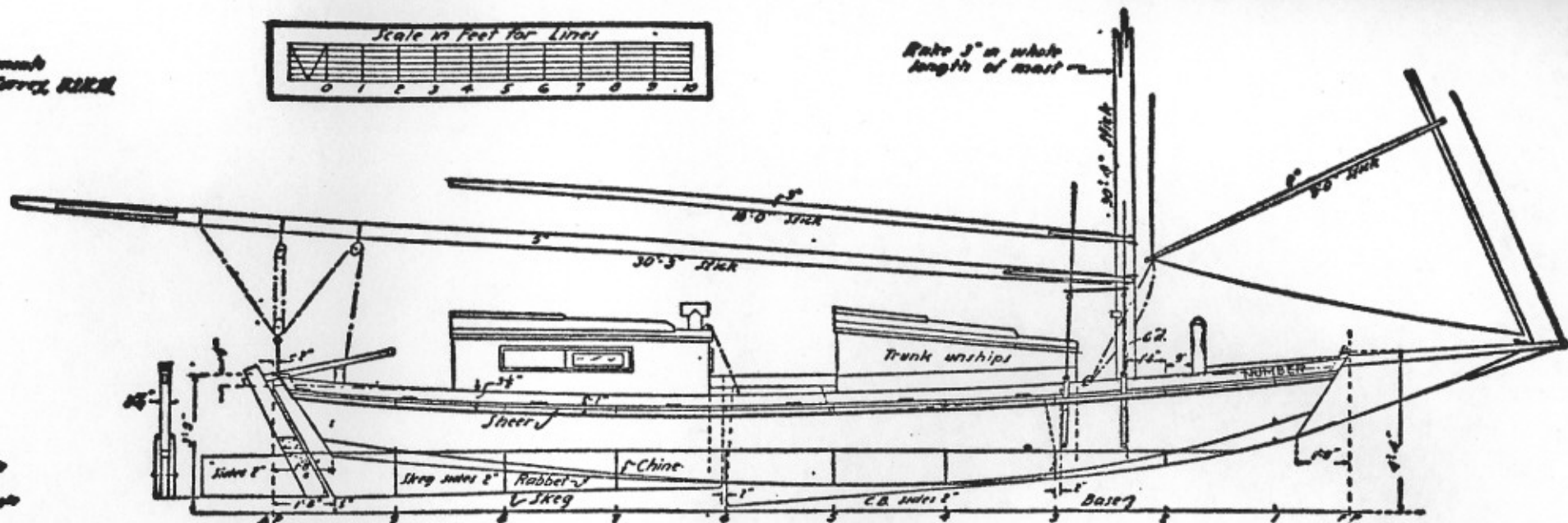
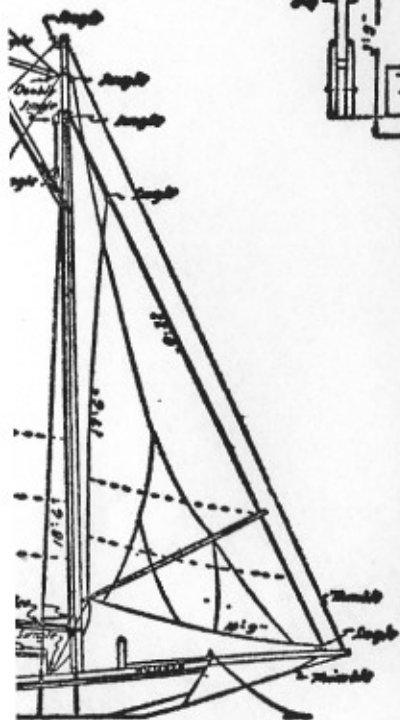


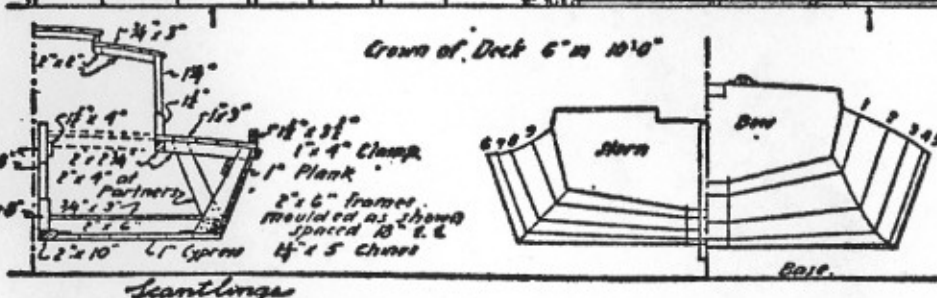
Loop
 in measurements
 of Marine Survey, BUREAU



Rate 3" in whole length of mast



Rail - blue
 Plank sheer white
 Guard - blue
 Top sides white
 Deck etc.
 Bottom red copper
 Port shrouds rattled down



Offsets in Feet Inches & Eighths to outside of plank

Station	Bow Trans	1	2	3	4	5	6	7	8	9	SWR Trans
Sheer	3-5-0	2-7-3	3-3-5	0-6-2	1-10-0	2-3-4	2-8-5	2-8-6	2-10-0	3-0-0	3-3-0
Chine	2-8-5	2-4-4	1-6-6	1-3-3	0-9-9	1-0-4	0-5-4	1-0-0	1-3-6	1-8-2	1-8-6
Rabbit	2-0-4	1-8-4	1-3-2	0-8-5	0-8-4	0-8-4	0-9-0	0-10-0	1-1-1	1-4-2	1-6-6
Sheer						0-7-4	straight line				6-5-0
Sheer	3-0-0	3-5-0	4-0-5	4-6-3	4-10-4	5-0-0	4-16-8	4-22-2	4-27-6	4-33-0	5-0-0
Chine	2-9-6	2-8-6	2-5-1	2-3-6	1-4-4	3-3-3	4-1-1	4-5-5	5-1-1	5-5-1	6-0-0
Rabbit	0-5-0					straight line					0-5-0

Sheer is under side of plank sheer.
 Chine & Rabbit, in profile, are straight lines for 12'0" abaft stem transom, and for about 4'5" afore stern transom.

tted as a camp boat, used in fishing near the Mexican border on the Gulf Coast. Some of these
 The boats range from 26 to 35 feet in length, 10 to 12 feet beam. The mast is usually stayed

